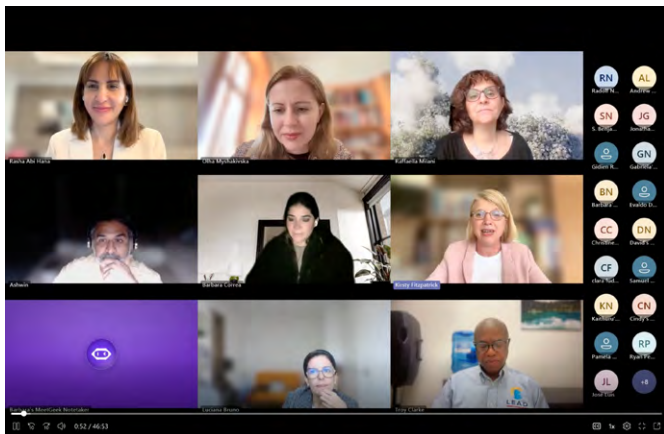


## NEWS / ISSUP

### ISSUP DELIVERS INTRODUCTION TO EVIDENCE-BASED PREVENTION (INEP) PLUS REFRESHER TRAINING

The **Introduction to Evidence-Based Prevention (INEP)** provides learners with the **essential principles of substance use prevention**. Developed by **Charles University (CUNI) in Prague**, the course content is based on the **European adaptation of the Universal Prevention Curriculum**.

With the support of **Charles University**, **INEP Plus** was developed by ISSUP to add value to the INEP content by providing **training for facilitators from National Chapters**, who can then deliver **INEP Plus courses within their own countries for beginners in prevention**. This approach helps strengthen the understanding of **evidence-based prevention** and supports stakeholders in recognising their role within prevention systems.



ISSUP recently delivered **INEP Plus refresher training** to National Chapters during **February–March 2026**, with two sessions conducted in **English and Spanish**.

The sessions provided an opportunity to present updates to the **INEP Plus training content and delivery process**, with the goal of helping National Chapters deliver the programme in a **simpler, clearer, and more effective way**.

To date, **more than 15 National Chapters** have delivered INEP Plus within their countries, with many more courses planned in the coming months.

For more information: [Click here](#)

### EXPANDING KNOWLEDGE RESOURCES: FROM DRUG DEMAND REDUCTION TO DRUG SUPPLY REDUCTION

ISSUP continues to expand its knowledge resources to better support the evolving needs of the global substance use workforce. While maintaining its strong focus on **Prevention, Treatment and Recovery Support**, ISSUP is strengthening its efforts in **Drug Supply Reduction (DSR)** by developing new resources and thematic content related to supply and market reduction. Through the **Knowledge Share** section of the ISSUP website, professionals can access evidence-based summaries of research papers, policy briefs, publications, news articles, resources, and global events addressing topics such as drug trafficking, production control, regulatory frameworks, and interdiction strategies.

ISSUP members are encouraged to contribute to the Knowledge Share by sharing news updates, research outputs, policy documents, case studies, and relevant events related to drug supply reduction.

At the same time, ISSUP is advancing the **Knowledge Share architecture** by reviewing and refining its **themes and sub-themes** to ensure the platform remains clear, relevant, and aligned with evolving priorities. This work includes responding to feedback on thematic descriptions and updating **target group classifications** to better reflect the diversity of professionals working in the field. These improvements aim to make the platform easier to navigate while strengthening professionalisation and cross-sector knowledge exchange across the entire substance use workforce.

ISSUP recognises that achieving a world where people live safer, healthier lives requires a coordinated, multidisciplinary approach where the world of prevention, treatment, recovery, and enforcement understands they each have a role to play. By accessing ISSUP's resources and Knowledge Share they have further tools to play that role effectively.

### TRAINING TEAM COLLABORATION

A new chapter in training has begun at **ISSUP** with the formation of a dedicated **Training Team**. The team's mission is to improve the **accessibility, relevance, and global reach of ISSUP's training**, ensuring that learning opportunities reflect the evolving needs of members worldwide.

During the initial months of its work, the team conducted a **training needs assessment** to better understand the online learning priorities of ISSUP members. This process is helping to shape future training strategies and ensure that learning op-

portunities remain practical, accessible, and responsive to the needs of the global substance use workforce.

At the same time, the team has been engaging with several **Learning Management System (LMS) providers** to explore options for a new platform that supports **high-quality, accessible online learning**. The proposals received are currently under review as part of this ongoing process.

This work is supported by an **LMS Task Force**, made up of members from different regions and areas of expertise. The task force meets monthly to guide discussions, provide insights, and support decision-making throughout the platform selection process.

We look forward to sharing further updates as this important work continues to develop in partnership with key agencies in this area.

For more information: [Click here](#)